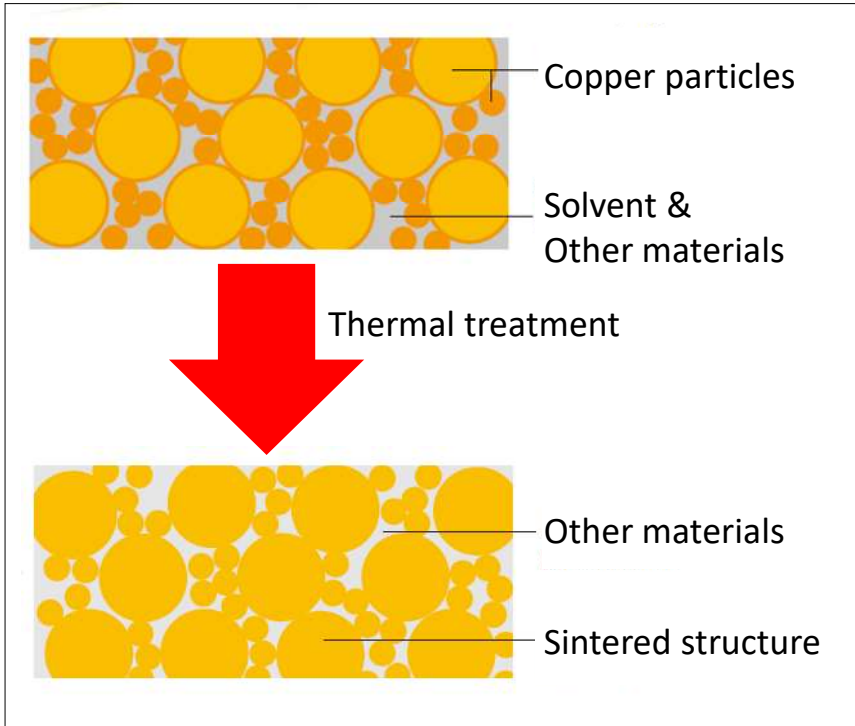


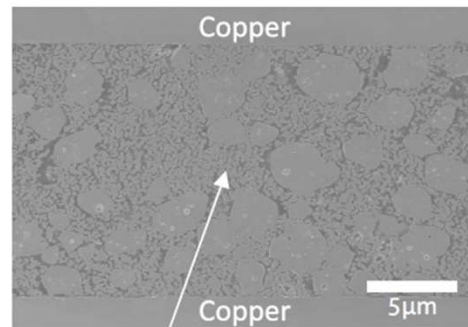
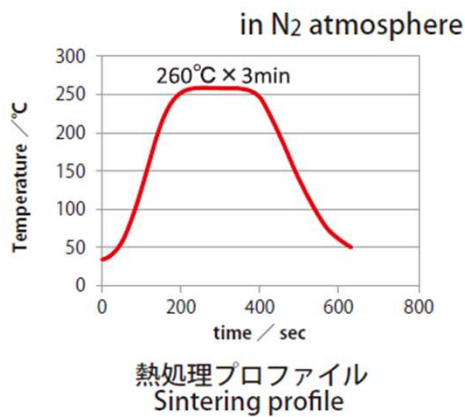
# Copper sintering paste



Exterior Surface of Copper sintering paste

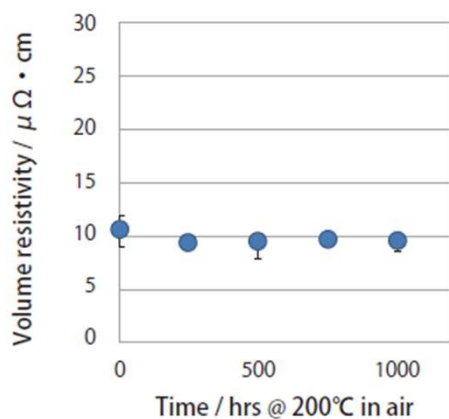
## Features of our products

- You can make excellent metal junction at low temperature (260°C) in a short time (3min) under N<sub>2</sub> atmosphere (You can use reflow process).



焼結した銅粒子  
Sintered copper particles

- High oxidation resistance



- High thermal conductivity

